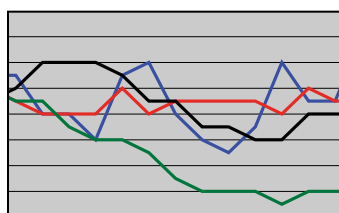




**The Cover**

The mechanics of molar eruption control using skeletal anchorage, as described by Drs. Chaffee, Kim, and Schudy, are pictured on this month's cover.



763 2009 Practice Study



773 Third Molar Anchorage



779 Palatal Gingiva

**DEPARTMENTS**

The Editor's Corner . . . 741  
 Contributors' Guide . . . 788  
 Continuing Education . . 793  
 Index to Volume XLIII . 795  
 Product News . . . . . 803  
 Classified. . . . . 805  
 Index of Advertisers . . . 807

**Skeletal Anchorage for Vertical Control in Extraction Treatment of Dolichofacial Patients**

MICHAEL P. CHAFFEE, DDS, MS  
SEONG-HUN KIM, DMD, MS, PHD  
GEORGE F. SCHUDY, DDS, MS

Skeletal anchorage can control molar eruption in both growing and non-growing patients.

**749**

**2009 JCO Orthodontic Practice Study Part 3 Practice Growth and Staff Data**

ROBERT G. KEIM, DDS, EDD, PHD  
EUGENE L. GOTTLIEB, DDS  
ALLEN H. NELSON, PHD  
DAVID S. VOGELS III

Growth in gross income and case starts over the past two years is examined, along with staffing patterns.

**763**

**CASE REPORT**

**Correction of Anterior Open Bite Using Maxillary Third Molar Anchorage**

FLAVIO URIBE, DDS, MDS  
LAURA POSADA, DDS  
RAVINDRA NANDA, BDS, MDS, PHD

Expendable third molars are used as anchorage to avoid side effects.

**773**

**Management of Excess Palatal Gingiva after Space Closure of Anterior Teeth**

HYUN-WOO JOO, DDS  
WON-HEE LIM, DDS, MS, PHD  
YOON-SHIK MOON, DDS, PHD  
SANG-JIN SUNG, DDS, PHD

Surgical removal of excess gingiva facilitates retention and hygiene.

**779**

**A Survey of Patient Opinions on Fixed vs. Removable Retainers**

ROBERT CERNY, BDS, MDS  
DEBORAH COCKRELL, PHD, BDS, FDS RCPS  
DEBORAH LLOYD, PHD, BA(Hons), Dip Ed

Patients compare permanently bonded to removable retainers.

**784**

**The Readers' Corner**

JOHN J. SHERIDAN, DDS, MSD

Topics are adult treatment and staff exercise programs.

**789**

The opinions expressed in the *Journal of Clinical Orthodontics* are those of the writers and do not necessarily reflect the opinions and policies of JCO. Copyright © 2009 JCO, Inc. *Journal of Clinical Orthodontics* (USPS 802-120, ISSN 0022-3875) is published monthly for \$235 per year (U.S. individual rate) by JCO, Inc., 1828 Pearl St., Boulder, CO 80302-5519. Periodicals postage paid at Boulder, CO, and additional mailing office. POSTMASTER: Send address changes to JCO, 1828 Pearl St., Boulder, CO 80302-5519. Phone: (303) 443-1720; e-mail: info@jco-online.com.